

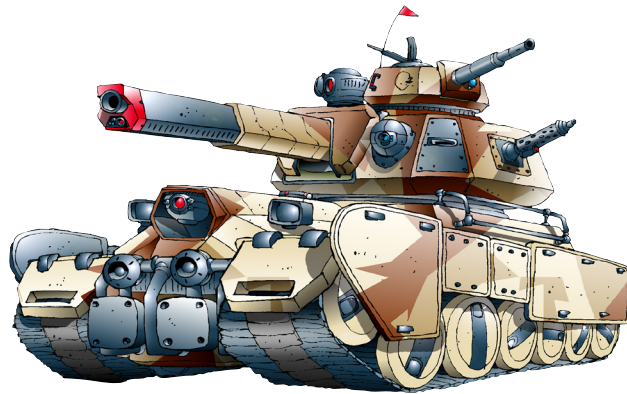
# Heavy Gear The Roleplaying Game 4th Edition

Extended Content  
22 September '23





Code Name:	Aller
Manufacturer:	Brok Enterprises
Unit Type:	Heavy Tank
Height:	3.8 m / 12.5 ft
Weight:	67,880 kg / 149,650 lbs
<p>The Aller is an advanced main battle tank designed to excel at combat with other armored units. All variants of the Aller carry heavy weaponry and are used to dominate open battlefields. The Naval Support Aller adds a battery of heavy anti-tank missiles, and the Hardy Aller replaces the rail gun with a more reliable tank gun.</p>	



Variant	TV	PL	Crew	MR	Arm	HI	GU	PI	EW	Weapons, Equipment & Traits	Type	HT
Master Aller	81	9	3	G:4	12	9	+0	-1	+1	LRL (T, Flak), MAC (T), MMG (R, Auto), MMG (L, Auto), LAPGL (Auto), MTG (T), HAPGL, Smoke Launchers, Rugged Terrain Kit, Field Armor, Drone Controller: 4, Transport: 2 Drones, Anti-Missile System, ECM Suite, ECCM Suite, Comms Suite	Veh	1"

Code Name:	ALU
Manufacturer:	Steelgate Central Foundries
Unit Type:	Trooper Automaton
Height:	2 meters / 6.5 ft
Weight:	5,200 kg / 11,464 lbs
<p>This Auto is representative of the most common type of front-line combat vehicles deployed prior the creation of the N-KIDU. It is designed using a large turret-like body, which forms the bulk of the machine, and multiple (usually six, sometimes eight) heavy leg mechanisms beneath.</p>	



Variant	TV	PL	Crew	MR	Arm	HI	GU	PI	EW	Weapons, Equipment & Traits	Type	HT
ALU	14	1	-	W:6	6	6	+0	+0	-1	LFC, 2x LRP	Drone:2	1"

Code Name:	Amalek APC
Manufacturer:	Various
Unit Type:	APC
Height:	4.73 meters / 15.5 ft
Weight:	5,900 kg / 123,080 lbs
<p>Amalek armored personnel carriers are used as jacks-of-all-trades by the Caprician security forces, and they were frequently seen in the streets and outskirts of Gomorrah and are now on Terra Nova. In addition to their combat duties, they have been used as ad-hoc command centers and transports.</p>	



Variant	TV	PL	Crew	MR	Arm	HI	GU	PI	EW	Weapons, Equipment & Traits	Type	HT
Amalek	16	1	1	G:9	5	8	+0	-1	+0	LGL, Medical Lab Kit, Spotlight, Comms Suite, Recon Sensors, Transport: 16 Infantry, Hostile Environment Kit	Veh	1"

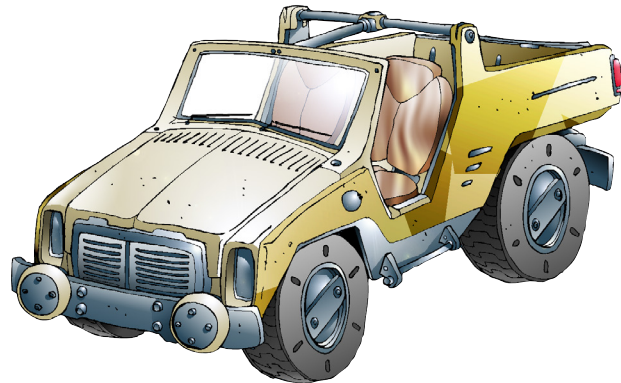
Code Name:	Anolis
Manufacturer:	Territorial Arms
Unit Type:	Recon Gear
Height:	3.9 m / 12.8 ft
Weight:	5,238 kg / 11,548 lb
<p>The Anolis was one of Territorial Arm's earliest attempts at designing a dedicated reconnaissance gear. Starting from the experience garnered with the Jager and its various bastardized scout offspring, the engineers of Design Team A12 started laying down plans for a highly mobile machine capable of scouting deep into enemy territory.</p>	



Location	Stock	Strip
Torso	2	6
R Manip	0	2
L Manip	0	2
R Shoulder	0	2
L Shoulder	0	0

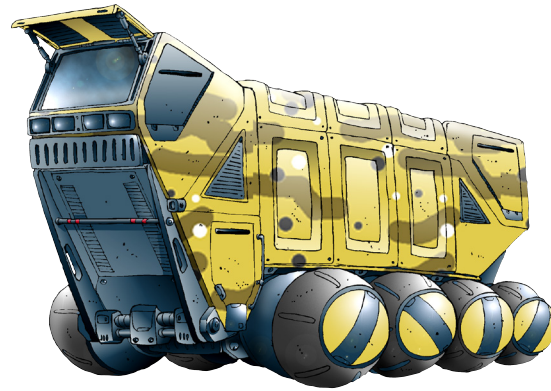
Variant	TV	PL	Crew	MR	Arm	HI	GU	PI	EW	Weapons, Equipment & Traits	Type	HT
Anolis	12	3	1	W/G:7	4	6	+0	+1	+1	LBZ (Manip), LVB (Manip), LRP (Shoulder), LFRG	Gear	1.5"
Swamp Upgrade	+1	+1	-	-	-	-	-	-	-	+ Amphibious Sealing	Gear	1.5"
<p>Hands, Early Warning System, Elite Sensors, Target Designator, ECCM Suite, Comms Suite, Widespread, High Maintenance, Extended Fuel Tanks</p>												

Code Name:	Antelope
Manufacturer:	Various
Unit Type:	Light Utility Vehicle
Height:	1.78 meters / 5.84 ft
Weight:	900 kg / 1,984.2 lbs
<p>The Antelope is a cheap and flexible 4x4 vehicle originally produced for the CNCS. Over the decades since its introduction, the Antelope and its many variants have become common sights not just in the north but the badlands and south too.</p>	



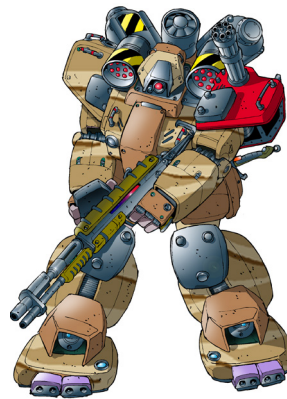
Variant	TV	PL	Crew	MR	Arm	HI	GU	PI	EW	Weapons, Equipment & Traits	Type	HT
Antelope	5	2	2	G:9	4	6	+0	+0	+0	Transport: 6 Infantry, Ubitquitous	Veh	0.5"
Antelope Technical	8	2	2	G:9	4	6	+0	+0	-0	MMG (T), Target Designator, Comms Suite, Ubitquitous	Veh	0.5"
Antelope Spotter	5	2	2	G:9	4	6	+0	+0	+1	TD, Recon Sensors, Ubitquitous	Veh	0.5"
Antelope Ambulance	5	2	2	G:9	4	6	+0	+0	+0	Medical Lab Kit, Ubitquitous	Veh	0.5"
Sprint Antelope	5	2	2	G:11	3	6	+0	+1	+0	Transport: 4 Infantry, Ubitquitous	Veh	0.5"

Code Name:	Barnaby
Manufacturer:	Territorial Arms
Unit Type:	Transport
Height:	9.74 m / 31.9ft
Weight:	51,845 kg / 114,298.7 lbs
<p>The Barnaby is the newest generation of gear transport in the AST arsenal. Prior to it, the AST had to partially rely on Northern Behemoth which left a bad taste in the mouth of many southerners.</p>	



Variant	TV	PL	Crew	MR	ARM	HI	GU	PI	EW	Equipment and Traits	Type	HT
Barnaby	14	4	2	G:8	8	8	-1	-1	-1	MMG (T), Transport: 6 Gears, Supply Storage, Ubitquitous, Rugged Terrain Refit, Extended Fuel Tanks	Veh	3"
Mother Barnaby	15	4	2	G:8	8	8	-1	-1	-1	MMG (T), Survey Kit, Repair Array, Supply Storage, Ubitquitous, Rugged Terrain Refit, Extended Fuel Tanks	Veh	3"
Spiked Barnaby	16	4	2	G:8	8	8	-1	-1	-1	MMG (T), MRP (T), Transport: 6 Gears, Supply Storage, Ubitquitous, Rugged Terrain Refit, Extended Fuel Tanks	Veh	3"
Barnaby Mk2	18	4	2	G:9	9	8	-1	-1	-1	MMG (T), Transport: 6 Gears, Supply Storage, Ubitquitous, Rugged Terrain Refit, Extended Fuel Tanks	Veh	3"

Code Name:	Bear
Manufacturer:	Northco
Unit Type:	Fire Support Gear
Height:	4.8 m / 15.8 ft
Weight:	8,456 kg / 18,642 lbs
<p>The Bear was designed for long range engagements and was the first fire support gear of the CNCS. The guided mortar has a long reach and a deadly punch, while the twin medium rocket packs mounted on its shoulders also allow it to be used in an assault role. The Bear was so successful that it went on to inspire the Grizzly.</p>	

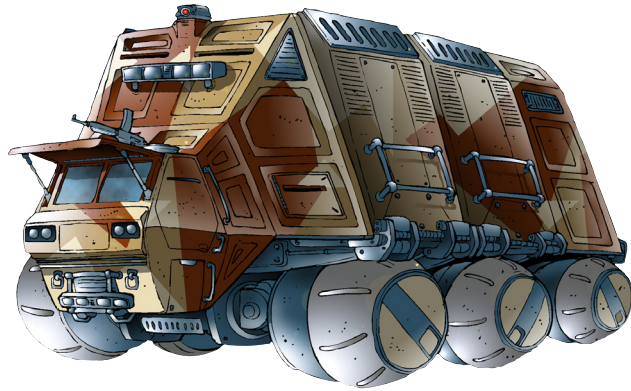


Location	Stock	Strip
Torso	4	10
R Manip	0	3
L Manip	0	3
R Shoulder	0	2
L Shoulder	0	2

Variant	TV	PL	Crew	MR	Arm	HI	GU	PI	EW	Weapons, Equipment & Traits	Type	HT
Feral Bear	19	5	1	W/G:6	7	7	+0	+0	-1	HGL (Manip), LVB (Manip), HMG (Auto), MRP (Link) (L&R Shoulders), LGM	Gear	2"
Strike Bear	18	4	1	W/G:6	7	7	+0	+0	-1	MBZ (Manip), LVB (Manip), HMG (Auto), MIRP (Link) (L&R Shoulders), LAPGL	Gear	2"
Destroyer Bear	20	4	1	W/G:6	7	7	+0	+0	-1	HBZ (Manip), MSG (Manip), HMG (Auto), MIRP (Link) (L&R Shoulders), LAPGL	Gear	2"

Hands, Low Tech, Widespread

Code Name:	Behemoth
Manufacturer:	Northco
Unit Type:	Transport
Height:	10.1 m / 33.2 ft
Weight:	51,235 kg / 112,953.8 lbs
<p>Originally developed in 1706, the Behemoth has been a staple of the CNCS armies ever since. The current version is the MK3 which debuted during the War of the Alliance. Passenger seating is not present and gear pilots are forced to endure the transit in their machines. Typical loads for a Behemoth are 5 vehicles.</p>	



Variant	TV	PL	Crew	MR	ARM	HI	GU	PI	EW	Equipment and Traits	Type	HT
Behemoth	13	3	2	G:7	9	8	-1	-1	-1	MMG (T), Transport: 4 Gears, Supply Storage, Ubitquitous, Extended Fuel Tanks	Veh	3"
Behemoth Ammo-Loader	13	3	2	G:7	9	8	-1	-1	-1	MMG (T), Reinforced Cockpit, Repair Array, Supply Storage, Ubiquitous, Extended Fuel Tanks	Veh	3"

Code Name:	Black Mamba
Manufacturer:	Territorial Arms
Unit Type:	Strike Gear
Height:	4.6 m / 15.1 ft
Weight:	6,500 kg / 14,330 lb
<p>One of the premier Southern gear designs, the Black Mamba is a relatively recent gear that has had a serious impact on the Terra Novan military scene. The Mamba is the result of the modernization program that swept the Southern military just before the War of the Alliance.</p>	

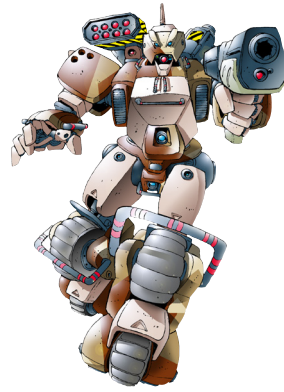


Location	Stock	Strip
Torso	7	12
R Manip	0	3
L Manip	0	3
R Shoulder	0	2
L Shoulder	2	2

Variant	TV	PL	Crew	MR	Arm	HI	GU	PI	EW	Weapons, Equipment & Traits	Type	HT
Barbed Fang Black Mamba	24	5	1	W/G:7	7	7	+1	+1	+0	MAC (Manip), LVB (Manip), LAR, LAPGL, LFRG	Gear	1.5"
Defender Black Mamba	24	5	1	W/G:7	7	7	+1	+1	+0	MAC (Manip), LVB (Manip), LAPGL, LFRG, Anti-Missile System, Recon Sensors	Gear	1.5"
Spitting Black Mamba	25	5	1	W/G:7	7	7	+1	+1	+0	LGL (Manip), LVB (Manip), LFM, LAPGL, LFRG	Gear	1.5"
Red-Eye Black Mamba MP	22	5	1	W/G:7	7	7	+1	+1	-1	MAAC (Manip), MCW (Manip), MPZ, LAPGL, Shield, Brawler:1, Intimidating	Gear	1.5"
Sapper Black Mamba MP	23	5	1	W/G:7	7	7	+1	+1	-1	MAC (Manip), MCW (Manip), MPZ, LAPGL, Shield, Brawler:1, Intimidating, LFRG	Gear	1.5"
Hunting Black Mamba MP	22	5	1	W/G:7	7	7	+1	+1	-1	MRF (Manip), MCW (Manip), MPZ, LAPGL, Shield, Brawler:1, Intimidating	Gear	1.5"

Hands, Early Warning System, Airborne Deployment Rig

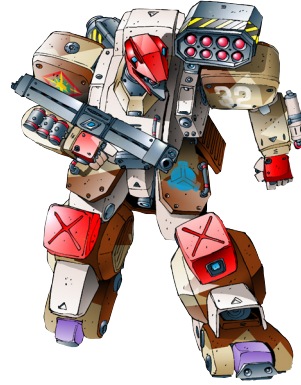
Code Name:	Bobcat
Manufacturer:	Northco
Unit Type:	Recon Gear
Height:	4.3 m / 14.1 ft
Weight:	5,689 kg / 14,526 lbs
<p>An early recon gear, the Bobcat's unique SMS design requires the gear to kneel down to engage its wheels. This configuration improves handling but also prevents its legs from being properly armored. Bobcats are often paired with Wildcats in the WFP, and despite their perceived obsolescence they perform admirably.</p>	



Location	Stock	Strip
Torso	3	7
R Manip	0	2
L Manip	0	2
R Shoulder	0	0
L Shoulder	0	0

Variant	TV	PL	Crew	MR	Arm	HI	GU	PI	EW	Weapons, Equipment & Traits	Type	HT
Bobcat UC	17	3	1	W/G:9	5	6	-1	+1	+0	HMG (Manip), LVB (Manip), LRP (Shoulder), Target Designator	Gear	1.5"
Strike Bobcat	17	1	1	W/G:9	5	6	-1	+1	+0	LRBZ (Torso), LVB (Manip), LFRG, Anti-Missile System	Gear	1.5"
Bobcat Fang	17	1	1	W/G:9	5	6	-1	+1	+0	LBZ (Bipod, Manip), LVB (Manip), Stabilizer	Gear	1.5"
Rabid Bobcat	18	1	1	W/G:9	5	6	-1	+1	+0	LGL (Manip), LVB (Manip), LRP (Shoulder), Target Designator	Gear	1.5"
<p>Hands, Comms Suite, ECCM Suite, Recon Sensors, Low Tech, Low Maintenance, Widespread, Brawler: -1</p>												

Code Name:	Cheetah
Manufacturer:	Shaian Mechanics
Unit Type:	Recon Gear
Height:	4.1 m / 13.5 ft
Weight:	5,230 kg / 11,530 lbs
<p>Packed with the best electronics available, the Cheetah is the gear of choice for reconnaissance and electronic warfare within the CNCS. Popular with pilots, the Cheetah's agility allows it to outmaneuver most attacks.</p>	



Location	Stock	Strip
Torso	2	14
R Manip	0	2
L Manip	0	2
R Shoulder	0	2
L Shoulder	0	0

Variant	TV	PL	Crew	MR	Arm	HI	GU	PI	EW	Weapons, Equipment & Traits	Type	HT
Cheetah Mk2	20	6	1	W/G:8	6	6	+1	+1	+1	LAC (Manip), LSG (Manip), LRP (Shoulder), Comms Suite, ECM Suite, ECCM Suite, Target Designator, Recon Sensors, Sensor Boom	Gear	1.5"
Cheetah MK2 Prototype	21	6	1	W/G:8	5	6	+1	+1	+1	MAC (Manip), LSG (Manip), LRP (Shoulder), LPZ, Comms Suite, ECM Suite, ECCM Suite, Target Designator, Recon Sensors	Gear	1.5"
Cheetah Initiate	20	5	1	W/G:9	5	6	+0	+1	+1	MFC (Manip), LVB (Link), LPZ (Manip), Comms Suite, ECM Suite, ECCM Suite, Target Designator, Recon Sensors, Brawler:1	Gear	1.5"
White Cat Pathfinder	21	6	1	W/G:9	5	6	+0	+1	+1	LRF (Manip), LVB (Manip), LRP (Shoulder), Advanced ECM Suite, ECCM Suite, Target Designator, Comms Suite, Satellite Uplink, Elite Sensors	Gear	1.5"
White Cat EWH	23	6	1	W/G:9	5	6	+0	+1	+1	LAC (Manip), LVB (Manip), LATM (Shoulder), Advanced ECM Suite, ECCM Suite, Target Designator, Comms Suite, Satellite Uplink, Elite Sensors	Gear	1.5"
Pathfinder White Cat EWH	23	6	1	W/G:9	5	6	+0	+1	+1	LRF (Manip), LVB (Manip), LATM (Shoulder), Advanced ECM Suite, ECCM Suite, Target Designator, Comms Suite, Satellite Uplink, Elite Sensors	Gear	1.5"
Silver Cat Pathfinder	22	6	1	W/G:8	5	6	+0	+1	+1	LRF (Manip), LVB (Manip), LIRP (Shoulder), Satellite Uplink, Comms, Suite Advanced ECM Suite, ECCM Suite, Target Designator, Recon Sensors, Vuln: Haywire	Gear	1.5"
Silver Cat	22	6	1	W/G:8	5	6	+0	+1	+1	MAC (Manip), LVB (Manip), Satellite Uplink, Comms, Suite Advanced ECM Suite, ECCM Suite, Target Designator, Recon Sensors, Vuln: Haywire	Gear	1.5"
Hands, Early Warning System, Widespread												



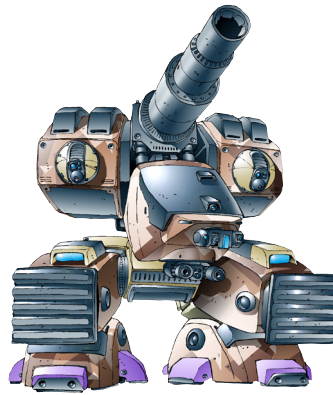
Code Name:	Cobra
Manufacturer:	Territorial Arms
Unit Type:	Fire Support Gear
Height:	5.0 m / 16.4 ft
Weight:	8,990 kg / 19,820 lb
Armed to the teeth and sporting armor to match, the Cobra is the AST's main fire support gear. Highly modular, the Cobra can be fitted in various configurations that are each capable of filling a variety of roles. Its ferocious reputation means that many Northern gear pilots treat the sighting of Cobras as a prelude to an assault.	



Location	Stock	Strip
Torso	4	16
R Manip	0	3
L Manip	0	3
R Shoulder	0	0
L Shoulder	0	0

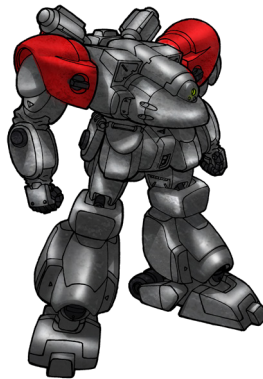
Variant	TV	PL	Crew	MR	Arm	HI	GU	PI	EW	Weapons, Equipment & Traits	Type	HT
Red-Eye Cobra MP	26	6	1	W/G:6	8	7	+0	+0	-1	HAAC (Manip), MCW (Manip), LFM, MMG, Airborne Deployment Rig, Shield, Intimidating, Brawler:1	Gear	2"
Hands, Quick Resonse System												

Code Name:	Damocles
Manufacturer:	Hartmore Motor Company
Unit Type:	Artillery Strider
Height:	6.8 meters / 11.5 ft
Weight:	23,450 kg / 51,698.4 lbs
Developed just prior to the Interpolar War, the Damocles is an artillery strider based on the venerable Mammoth chassis. The preproduction model did not include arms initially and lacked offroad capability but both were rectified in the A2 production model. While rare, the Damocles is used in support of field forces against the CEF.	



Variant	TV	PL	Crew	MR	Arm	HI	GU	PI	EW	Weapons, Equipment & Traits	Type	HT
Damocles	62	8	2	W/G:5	11	10	+0	-1	+0	HAG, 2x LPL (Flak), MMG (Link), MCW, Quick Resonse System, Lumbering, Anti Missile System	Str	2"
Damocles A2	64	8	2	W:4	11	10	+0	-1	+0	HAG, 2x LPL (Flak), MMG (Link), MCW, Quick Resonse System, Lumbering, Hands, Anti Missile System	Str	2"

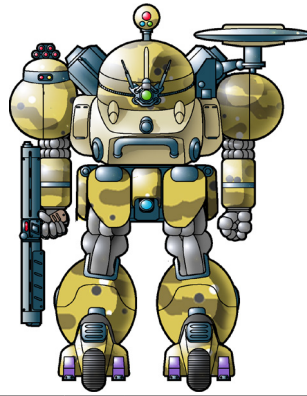
Code Name:	Diamondback
Manufacturer:	Mandeers Heavy Industries / Dynamic Systems
Unit Type:	Strike Gear
Height:	4.6 m / 15.1 ft
Weight:	6,575 kg / 14,495 lb
The latest design to be produced by Mandeers Heavy Industries and the engineering experts of Dynamic Systems, the Diamondback gear is a culmination of two decades of development. The result is a heavy trooper gear that can outlast any other gear in its class without compromising on weapons.	



Location	Stock	Strip
Torso	6	11
R Manip	0	3
L Manip	0	3
R Shoulder	0	0
L Shoulder	0	0

Variant	TV	PL	Crew	MR	ARM	HI	GU	PI	EW	Equipment and Traits	Type	HT
Barbed Diamondback	35	4	1	W/G:7	7	7	+0	+1	-1	MAC (Manip), LVB (Manip), HAPR, LAPGL	Gear	1.5"
Red-Eye Diamondback	22	4	1	W/G:7	7	7	+0	+1	-1	MAAC (Manip), LVB (Manip), MAPR, LAPGL	Gear	1.5"
Hands, Early Warning System, Airborne Deployment Rig, Field Armor												

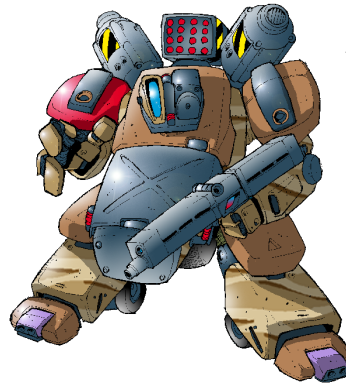
Code Name:	ELINT Silverscale
Manufacturer:	Territorial Arms
Unit Type:	Recon Gear
Height:	4.2 meters / 13.8 ft
Weight:	4,890 kg / 10,781 lb
<p>Based on the Basilisk trooper gear, the Silverscale comes equipped with an even more advanced communications and electronic warfare suite. The target designator can extend out from the head and can be used to peer around corners. Territorial Arms claims the Silverscale is the finest recon gear on Terra Nova today.</p>	



Location	Stock	Strip
Torso	2	6
R Manip	0	2
L Manip	0	2
R Shoulder	0	2
L Shoulder	0	0

Variant	TV	PL	Crew	MR	Arm	HI	GU	PI	EW	Weapons, Equipment & Traits	Type	HT
ELINT Silverscale	18	6	1	W/G:7	5	6	+0	+0	+1	LSMG (Manip), LVB (Manip), LAPGL, Sensor Boom, Target Designator	Gear	1.5"
Black Box Silverscale	17	6	1	W/G:7	5	6	+0	+0	+1	LAC (Manip), LVB (Manip), LAPGL	Gear	1.5"
Hands, Comms Suite, Advanced ECM Suite, ECCM Suite, Elite Sensors, Extended Fuel Tanks												

Code Name:	Ferret
Manufacturer:	Keimuri Gears
Unit Type:	Recon Gear
Height:	3.2 m / 10.5 ft
Weight:	4,210 kg / 9,282 lbs
<p>The Ferret serves the Northern armies as an effective recon gear. Its low cost matched with a good track record has allowed this aging design to endure. Ferret pilots tend to avoid high-intensity combat and concentrate on recon duties, operating the gear in its SMS mode and, racing across the landscape as it scans for trouble.</p>	



Location	Stock	Strip
Torso	1	11
R Manip	0	2
L Manip	0	2
R Shoulder	0	0
L Shoulder	0	0

Variant	TV	PL	Crew	MR	ARM	HI	GU	PI	EW	Equipment and Traits	Type	HT
Ferret Fang	16	4	1	W/G:9	4	6	-1	+1	+1	LRBZ (Manip), LVB (Manip), LRP, ECM Suite, Recon Sensors, Target Designator	Gear	1"
Ferret Paratrooper	19	6	1	W/G:9	4	6	-1	+1	+1	LAC/LGL (Manip), LVB (Manip), ECCM Suite, Elite Sensors, Target Designator, Airborne Deployment Rig	Gear	1"
Rabid Ferret Paratrooper	19	4	1	W/G:9	4	6	-1	+1	+1	MSMG (Manip), LVB (Manip), LPZ, ECCM Suite, Elite Sensors, Target Designator, Airborne Deployment Rig	Gear	1"
Hands, Brawler:-1, Comms Suite, Widespread, Extended Fuel Tanks												

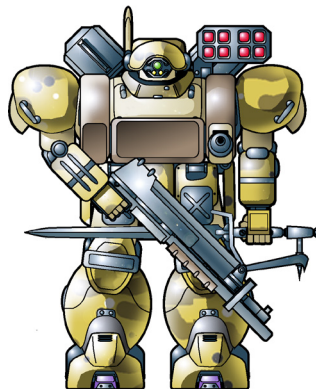
Code Name:	G-16
Manufacturer:	Moscow Heavy Industries
Unit Type:	Trooper Frame
Height:	4.6 meters / 15.1 ft
Weight:	6,200 kg / 13,669 lbs
<p>The G-16 frame is a relatively recent sight amongst CEF forces, particularly those assigned to the Earth Administrative Zone. Fundamentally a F6-16, the G-16 exchanges the more maintenance and power demanding laser weapons with locally available weapon systems.</p>	



Location	Stock	Strip
Torso	5	8
R Manip	0	2
L Manip	2	2
R Shoulder	0	0
L Shoulder	0	0

Model Name	TV	PL	Crew	MR	ARM	HI	GU	PI	EW	Equipment and Traits	Type	HT
G-16	15	1	1	W/H:7	7	6	+0	+0	-1	MAC (Manip), LVB (Manip)	Gear	1.5"
ECM Package	+2	+1	-	-	-	-	-	-	+1	+ ECM Suite	-	-
Anti-Tank Package	+0	+0	-	-	-	-	-	-	-	- MAC (Manip), + MBZ (Manip)	-	-
Assault Package	+2	+1	-	-	-	-	-	-	-	- MAC (Manip), + HAC (Manip), + Buckler	-	-
Recon Package	+1	+1	-	-	-	-	-	-	-	+ Comms Suite, + Recon Sensors	-	-
Security Package	+2	1	-	-	-	-	-	-	+1	- MAC (Manip), + MFC (Manip), + Shield	-	-
Striker Package	+2	+1	-	-	-	-	-	-	-	+ LFM	-	-
Command Upgrade	+1	+1	-	-	-	-	-	-	+1	+ Comms Suite	-	-
Mobility Pack Upgrade	+2	+1	-	-	-	-	-	-	-	+ Airborne Deployment Rig, + Jetpack	-	-
Hands, Forearm Hardpoints, Low Maintenance												

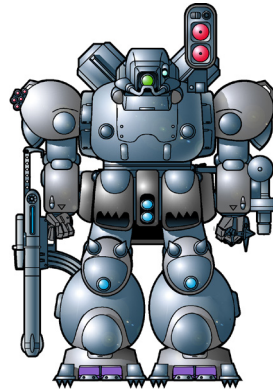
Code Name:	Gila
Manufacturer:	Territorial Arms
Unit Type:	Strike Gear
Height:	4.1 m / 13.5 ft
Weight:	6,125 kg / 13,503 lb
<p>Developed as an upgraded variant of the highly successful Iguana, the Gila design focuses on the light trooper capabilities of the Iguana and the potential lethality of an Iguana in an assault role. The stock Gila comes armed with a state-of-the-art heavy submachine gun and an integrated underslung frag cannon.</p>	



Location	Stock	Strip
Torso	6	10
R Manip	0	2
L Manip	0	2
R Shoulder	0	2
L Shoulder	0	0

Variant	TV	PL	Crew	MR	Arm	HI	GU	PI	EW	Weapons, Equipment & Traits	Type	HT
Brawler Gila	14	8	1	W/G:7	6	6	+0	+1	+0	LGL (Manip), LVR (Manip), LRP (Shoulder), MPZ	Gear	1.5"
Barbed Gila	16	8	1	W/G:7	6	6	+0	+1	+0	HSMG/LFC (Manip), LVR (Manip), MRP (Shoulder), MPZ	Gear	1.5"
Hands, Early Warning System, Brawler:1, Field Armor, LFL (Torso), Fireproofing												

Code Name:	Gold Mamba
Manufacturer:	Territorial Arms
Unit Type:	Advanced Mountain Strike Gear
Height:	4.6 meters / 15.1 ft
Weight:	6,700 kg / 11,788 lb
<p>The Gold Mamba started as an alternative to the Rock Mamba. Technicians would use a second prototype to install expensive and high tech systems to solve any problem while the Rock Mamba was in testing. The Gold Mamba was produced on a very small scale and TA does continue to support its design, likely to help recoup the cost.</p>	



Location	Stock	Strip
Torso	7	14
R Manip	0	3
L Manip	0	3
R Shoulder	0	2
L Shoulder	0	0

Variant	TV	PL	Crew	MR	Arm	HI	GU	PI	EW	Weapons, Equipment & Traits	Type	HT
Gold Mamba	30	9	1	W/G:7	7	7	+1	+1	+0	MAC (Silent) (Manip), LSG (Manip), LFM, LATM (Shoulder), MPZ, LAPGL	Gear	1.5"
Blazing Gold Mamba	33	9	1	W/G:7	7	7	+1	+1	+0	MRL (Manip), LSG (Manip), LFM, LATM (Shoulder), MPZ, LAPGL	Gear	1.5"
Force Gold Mamba	31	9	1	W/G:7	7	7	+1	+1	+0	LPL (Manip), LSG (Manip), LFM, LATM (Shoulder), MPZ, LAPGL	Gear	1.5"
Razorfang Upgrade	+2	+1	-	-	-	-	-	-	+1	+ Satellite Uplink	-	-
<p>Hands, Early Warning System, Climbing Gear, Stealth Kit, Advanced Control System, Airborne Deployment Rig, Rare</p>												

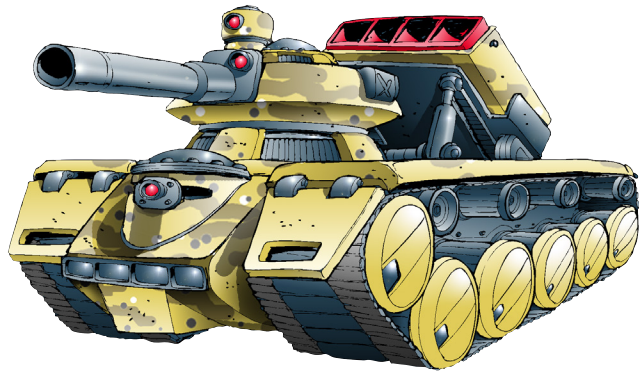
Code Name:	Grizzly
Manufacturer:	Northco / Shaian
Unit Type:	Fire Support Gear
Height:	5.1 m / 16.7 ft
Weight:	9,210 kg / 20,305 lbs
<p>The Grizzly has been the most common Northern fire support gear since the War of the Alliance. A big, brutal, and obnoxious creature like its namesake, the Grizzly is capable of both long range fire support and heavy assault. It can also be a devastating anti-gear weapon if screened by lighter units.</p>	



Location	Stock	Strip
Torso	4	12
R Manip	0	3
L Manip	0	3
R Shoulder	0	3
L Shoulder	0	3

Variant	TV	PL	Crew	MR	Arm	HI	GU	PI	EW	Weapons, Equipment & Traits	Type	HT
Grizzly Initiate	27	5	1	W/G:6	8	7	+0	+0	-1	MFC (Linked) (Torso), MVB (Reach: 1, Link) (L&R Manip), HFRG, Ram Plate	Gear	2"
Strike Grizzly	23	4	1	W/G:6	8	7	+0	+0	-1	MBZ (Manip), LSMG, LVB (Manip), MRP (Link) (L&R Shoulders), HMG	Gear	2"
Mountain Grizzly	24	5	1	W/G:6	8	7	+0	+0	-1	HGL (Manip), LSMG, LVB (Manip), MFM, HMG, Climbing Gear	Gear	2"
<p>Hands, Quick Response System</p>												

Code Name:	Hun
Manufacturer:	Various
Unit Type:	Light Tank
Height:	2.6 m / 8.5 ft
Weight:	24,500 kg / 54,013 lb
<p>The main light battle tank employed by the South, the Hun is a dependable and effective design. Its flexible design allows it to be adapted to a variety of roles ranging from a frontline fighting unit to a heavy APC. It is produced by many manufacturers, and has seen over a century of service.</p>	



Variant	TV	PL	Crew	MR	Arm	HI	GU	PI	EW	Weapons, Equipment & Traits	Type	HT
Hooded Hun	32	7	2	G:6	8	9	+0	-1	-1	MLC (T, Flak, Auto), HRF (T), MAPGL, MAR (T), Amphibous Sealing, Rugged Terrain Refit, Smoke Launchers, Widespread	Veh	1"
Airdrop Upgrade	+2	+1	-	-	-	-	-	-	-	+ Airborne Deployment Rig	-	-

Code Name:	Hunter
Manufacturer:	Northco
Unit Type:	Trooper Gear
Height:	4.3 m / 14.1 ft
Weight:	6627 kg / 14610 lbs
<p>The Hunter Gear was the first purpose-built combat walker on Terra Nova, the forerunner of all subsequent Northern league designs, and remains among the most produced gears still in active service. Refitted several times to keep it competitive, its greatest strength has always been the simplicity and ruggedness of the chassis.</p>	



Location	Stock	Strip
Torso	5	8
R Manip	0	2
L Manip	0	2
R Shoulder	0	2
L Shoulder	0	0

Variant	TV	PL	Crew	MR	ARM	HI	GU	PI	EW	Equipment and Traits	Type	HT
Hunter Initiate	20	4	1	W/G:6	6	7	+0	+0	-1	HAC (Manip), LVB (Link), LPZ, LAPGL, Brawler: 1	Gear	1.5"
Hands, Ubiquitous, Widespread												

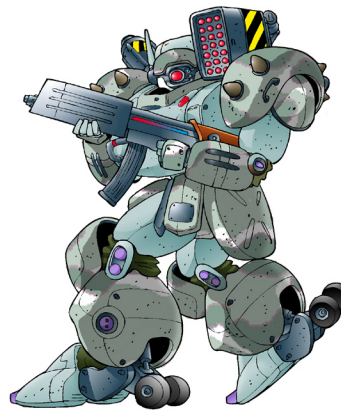
Code Name:	Hunter Commando
Manufacturer:	Northco
Unit Type:	Commando Gear
Height:	4.3 meters / 14.1 ft
Weight:	6,627 kg / 14,610 lb
<p>The Hunter Commando is one of the most recognized of all Hunter variants. It first saw action in 1782 and was the first fully airdroppable Northern gear. While not designed for stealth, this made it the best commando unit available to commanders for many cycles. The design fell out of favor with the release of the Jaguar.</p>	



Location	Stock	Strip
Torso	5	9
R Manip	0	2
L Manip	0	2
R Shoulder	0	2
L Shoulder	0	0

Variant	TV	PL	Crew	MR	ARM	HI	GU	PI	EW	Equipment and Traits	Type	HT
Hunter Commando	20	4	1	W/G:6	6	7	+0	+0	-1	LBZ (Manip), LSG (Manip), MRP (Shoulder)	Gear	1.5"
Wild Hunter Commando	23	4	1	W/G:6	6	7	+0	+0	-1	LBZ (Manip), LVB (Manip), ECCM Suite, ECM Suite, Satellite Uplink	Gear	1.5"
Hunter Commando Storm	21	4	1	W/G:6	6	7	+0	+0	-1	LAC (Manip), LSG (Manip), LGM, LAPGL	Gear	1.5"
Spearhead Upgrade	+1	+1	-	-	-	-	-	-	+1	+ Satellite Uplink, + ECCM Suite, + Vuln: Haywire		-
Mountain Upgrade	+2	+2	-	-	-	-	-	-	-	+ MCW (Torso), + Climbing Gear		
Hands, Airborne Deployment Rig, Recon Sensors, Comms Suite												

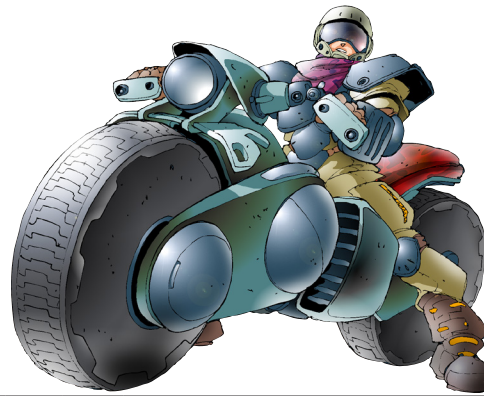
Code Name:	Iguana
Manufacturer:	Territorial Arms / Skavara Heavy Industries
Unit Type:	Recon Gear
Height:	4.1 m / 13.5 ft
Weight:	5,100 kg / 11,244 lb
<p>Since its introduction, the Iguana has proven itself to be an extremely successful design. The Iguana saw extensive action in the War of the Alliance, where it was deployed as a recon, light trooper, and commando gear. The flexibility of this gear's design was so apparent that it has even served as a command platform.</p>	



Location	Stock	Strip
Torso	2	14
R Manip	0	2
L Manip	0	2
R Shoulder	0	2
L Shoulder	0	0

Variant	TV	PL	Crew	MR	Arm	HI	GU	PI	EW	Weapons, Equipment & Traits	Type	HT
Stalking Iguana MP	15	4	1	W/G:8	5	6	+0	+1	-1	LRF (Manip), MCW (Manip), LPZ, LAPGL, Shield, Brawler:1, Intimidating, Airborne Deployment Rig	Gear	1.5"
Sapper Iguana MP	15	4	1	W/G:8	5	6	+0	+1	-1	LAC (Manip), MCW (Manip), LPZ, LAPGL, Shield, Brawler:1, Intimidating, Airborne Deployment Rig, LFRG	Gear	1.5"
Red-Eye Iguana MP	15	4	1	W/G:8	5	6	+0	+1	-1	LAAC (Manip), MCW (Manip), LPZ, LAPGL, Shield, Brawler:1, Intimidating, Airborne Deployment Rig	Gear	1.5"
Riotmaster Blitz Iguana	15	4	1	W/G:8	5	6	+0	+1	+2	MFC (Manip), LVB (Manip), LRP (Shoulder), Recon Sensors	Gear	1.5"
Hands, Early Warning System, Comms Suite, Widespread												

Code Name:	Jackrabbit
Manufacturer:	Various
Unit Type:	All-Terrain Vehicle
Height:	1.64 meters / 5.5 ft
Weight:	250 kg / 551.2 lbs
<p>The Jackrabbit is used for badlands operations by the AST infantry. The overall design has been in use for centuries. The design has since become a symbol of the resistance of the youth against the AST and the Southern Republic. Options for this vehicle include a weaponized version and a side car.</p>	



Variant	TV	PL	Crew	MR	ARM	HI	GU	PI	EW	Equipment and Traits	Type	HT
Jackrabbit Motorcycle	8	2	1	G:11	3	3	+0	+1	-1	MMG, LGL, Early Warning System, Exposed Pilot	Veh	0.5"
Jackrabbit	4	2	1	G:11	3	3	+0	+1	-1	Early Warning System, Exposed Pilot	Veh	0.5"
Jackrabbit B	6	4	1	G:11	3	3	+0	+1	-1	Early Warning System, Transport: 1 Infantry, Exposed Pilot	Veh	0.5"

Code Name:	Jager
Manufacturer:	Territorial Arms
Unit Type:	Trooper Gear
Height:	4.3 m / 14.1 ft
Weight:	6,637 kg / 14,632 lb
<p>The oldest and most basic gear fielded by the South, the Jager began its existence as a shameless copy of the Hunter. Indeed, Republican commandos stole a Hunter prototype and engineers were able to create a near-exact copy for operations at the end of the Southern War that led to the creation of the Allied Southern Territories.</p>	



Location	Stock	Strip
Torso	5	8
R Manip	0	2
L Manip	0	2
R Shoulder	0	2
L Shoulder	0	0

Variant	TV	PL	Crew	MR	ARM	HI	GU	PI	EW	Equipment and Traits	Type	HT
Armored Jager	18	3	1	W/G:5	7	8	+0	+0	-1	LAC (Manip), LVB (Manip), LRP (Shoulder), LAPGL, LFRG	Gear	1.5"
Desert Jager	14	2	1	W/G:6	6	7	+0	+0	-1	LAC (Manip), LVB (Manip), LRP (Shoulder), LAPGL, LFRG, Searchlight, Survey Kit	Gear	1.5"
Flammjager Bunker Buster	15	4	1	W/G:6	6	7	+0	+0	-1	MFL (Manip), LVB (Manip), LIRP (Shoulder), LAPGL, Fireproofing, HPZ	Gear	1.5"
Jager Command Hero	19	4	1	W/G:6	7	7	+0	+0	+0	MAC (Manip), LVB (Manip), LRP (Shoulder), LAPGL, LFRG, Comms Suite	Gear	1.5"
Jager Commando	19	6	1	W/G:6	6	7	+0	+0	-1	LRF (Manip), LVB (Manip), LATM (Shoulder), LAPGL, LFRG, Stealth Kit, Armored Jacket, Extended Fuel Tanks	Gear	1.5"
Jager Blacksmith	13	3	1	W/G:6	6	7	+0	+0	-1	LP (Manip), LVB (Manip) LAPGL, LFRG, Minelaying Gear: 3, Reinforced Cockpit	Gear	1.5"
Jager Observer	15	4	1	W/G:6	6	7	+0	+0	-1	LAC (Manip), LVB (Manip), LAPGL, LFRG, Sensor Boom, Target Designator, Comms Suite	Gear	1.5"
Red Eye Jager	13	1	1	W/G:6	6	7	+0	+0	-1	MAAC (Manip), LVB (Manip), LAPGL, LFRG	Gear	1.5"
Swamp Jager	14	2	1	W/G:6	6	7	+0	+0	-1	LAC (Manip), LVB (Manip), LRP (Shoulder), LAPGL, LFRG, Amphibious Sealing	Gear	1.5"

Hands, Ubiquitous, Widespread

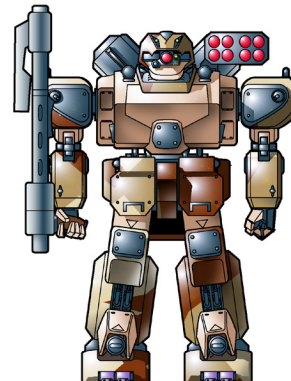
Code Name:	Jaguar
Manufacturer:	Northco
Unit Type:	Strike Gear
Height:	4.6 m / 15 ft
Weight:	7,123 kg / 15,704 lbs
One of the most advanced gears in the Northern armed forces, the Jaguar was developed by Northco in the early 1900s as a possible successor of the Hunter. Only the high cost of the machine prevented this from happening. The Jaguar features an exceptional balance of speed, firepower, and agility.	



Location	Stock	Strip
Torso	7	12
R Manip	0	3
L Manip	0	3
R Shoulder	0	2
L Shoulder	2	2

Variant	TV	PL	Crew	MR	Arm	HI	GU	PI	EW	Weapons, Equipment & Traits	Type	HT
Rabid Jaguar	21	5	1	W/G:7	7	6	+1	+1	+0	MGL (Manip), LVB (Manip), LRP (Shoulder), LAPGL	Gear	1.5"
Jaguar UC	19	5	1	W/G:7	7	6	+1	+1	+0	MFC (Manip), LVB (Manip), LAPGL, MPZ	Gear	1.5"
Sand Cat	21	5	1	W/G:7	7	6	+1	+1	+0	MAC (Manip), LVB (Manip), LRP (Shoulder), LAPGL, Resist: Corrosion, Vuln: Fire	Gear	1.5"
Sticky Cat	19	5	1	W/G:7	7	5	+1	+1	+0	MAC (Manip), LVB (Manip), LRP (Shoulder), LAPGL, Resist: Corrosion	Gear	1.5"
Hands, Early Warning System, Airborne Deployment Rig												

Code Name:	Jaguarundi
Manufacturer:	Northco
Unit Type:	Advanced Strike Gear
Height:	4.6 meters / 15.1 ft
Weight:	7,020 kg / 15,476 lbs
The Jaguarundi was originally conceived by Northco as a competitor to Shaian's Strike Cheetah as a scout platform. Designers used the recent Jaguar chassis and turned out a heavy scout that wasn't as fast as the Strike Cheetah and was more expensive. Limited production did occur though and examples can be seen across Terra Nova.	

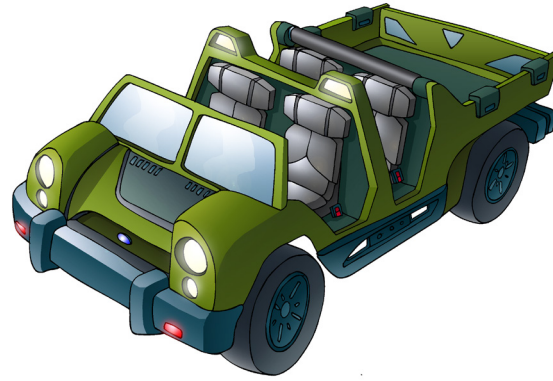


Location	Stock	Strip
Torso	5	12
R Manip	0	2
L Manip	0	2
R Shoulder	0	2
L Shoulder	0	0

Variant	TV	PL	Crew	MR	Arm	HI	GU	PI	EW	Weapons, Equipment & Traits	Type	HT
Jaguarundi	20	4	1	W/G:8	6	6	+1	+1	+0	MAC (Manip), LSMG, LVB (Manip), MRP (Shoulder), LAPGL	Gear	1.5"
Jaguarundi Fang	19	4	1	W/G:8	6	6	+1	+1	+0	LBZ (Manip), LVB (Manip), MRP (Shoulder), LAPGL	Gear	1.5"
Pathfinder Jaguarundi	22	4	1	W/G:8	6	6	+1	+1	+0	MRF (Manip), LVB (Manip), MRP (Shoulder), LAPGL, LPZ	Gear	1.5"
Thunder Upgrade	+2	+1	-	-	-	-	-	-	+1	+ Satellite Uplink	-	-
Seccom Upgrade	+2	+1	-	-	-	-	-	-	+1	+ ECCM Suite	-	-
Pathfinder Upgrade	+2	+1	-	-	-	-	-	-	+1	+ Recon Sensors	-	-
Hands, Rare, Early Warning System, Airborne Deployment Rig												



Code Name:	Jophi
Manufacturer:	Various
Unit Type:	Light Utility Vehicle
Height:	1.9 meters / 6.0 ft
Weight:	1,400 kg / 3,086 lbs
<p>The cheap cost and simple construction makes the Jophi the choice vehicle for basic road travel. The Jophi is so easy to modify that there are countless configurations utilized. The vehicle is a 4x4 with a gas turbine engine.</p>	



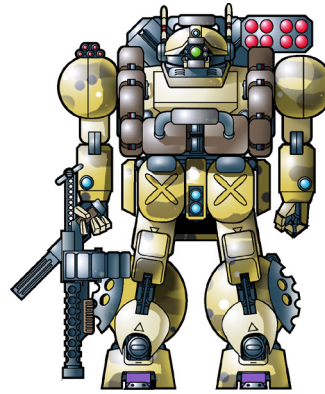
Variant	TV	PL	Crew	MR	Arm	HI	GU	PI	EW	Weapons, Equipment & Traits	Type	HT
Jophi	5	2	2	G:9	4	6	+0	+0	+0	Transport: 8 Infantry, Low Tech	Veh	0.5"
Jophi Technical	8	2	2	G:9	4	6	+0	+0	-0	MMG (T), Low Tech	Veh	0.5"

Code Name:	Klemm
Manufacturer:	Norlight Industries
Unit Type:	Light Tank
Height:	2.5 m / 8.2 ft
Weight:	25,650 kg / 34,502 lbs
<p>The Klemm is a light, fast tank that is armed with a bank of six anti-tank missiles that allows it to punch above its weight against heavier enemy armor or provide fire support for spotter units equipped with target designators. The chassis is very modular for a tank, and has been used as a basis for many variants.</p>	



Variant	TV	PL	Crew	MR	Arm	HI	GU	PI	EW	Weapons, Equipment & Traits	Type	HT
Master Klemm	39	7	2	G:6	8	9	+0	-1	-1	MAC (T), MATM (T, Extra Ammo:4), MAPGL, Smoke Launchers, Rugged Terrain Refit, Widespread, Ram Plate, ECM Suite, Comms Suite, Sensor Boom	Veh	1"
Master Klemm CBS	37	7	2	G:6	8	9	+0	-1	-1	MAC (T), MAPGL, Smoke Launchers, Rugged Terrain Refit, Widespread, Ram Plate, ECM Suite, Comms Suite, Sensor Boom, Anti-Missile System	Veh	1"

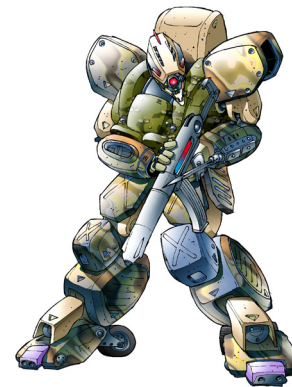
Code Name:	Longwalk Jager
Manufacturer:	Territorial Arms
Unit Type:	Long Range Attack Gear
Height:	4.3 meters / 14.0 ft
Weight:	5,200 kg / 11,464 lb
<p>Ligher than the original Jager, the Longwalk Jager is designed for extreme long range patrols and operations. To do this, it sacrifices armor to the point it has less armor than the SD Jager but manages to retain a respectable weapons suite. This vehicle is commonly seen in MILICIA units on border security duty.</p>	



Location	Stock	Strip
Torso	3	5
R Manip	0	2
L Manip	0	2
R Shoulder	0	2
L Shoulder	0	0

Variant	TV	PL	Crew	MR	Arm	HI	GU	PI	EW	Weapons, Equipment & Traits	Type	HT
Longwalk Jager	19	3	1	W/G:6	5	6	+0	+1	-1	LAC/LGL (Manip), LVB (Manip), LRP (Shoulder), LAPGL	Gear	1.5"
Longwalk Jager Prototype	22	5	1	W/G:6	5	6	+0	+1	+0	LAC/LGL (Manip), LVB (Manip), LIRP (Shoulder), LAPGL, LPZ, Satellite Uplink	Gear	1.5"
Hands, Ubiquitous, Widespread, Quick Response System, Airborne Deployment Rig, Extended Fuel Tanks												

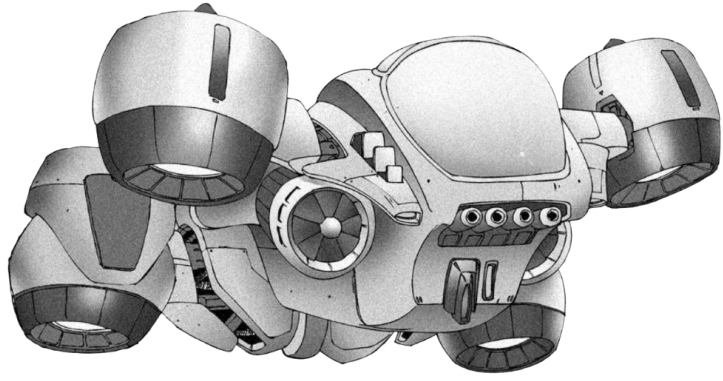
Code Name:	Metal Cat
Manufacturer:	Shaian Mechanics
Unit Type:	Light Strike Gear
Height:	4.1 meters / 13.5 ft
Weight:	5,850 kg / 12,897 lbs
<p>The Metal Cat is essentially an armored-up Cheetah with the high-end electronics stripped out. Metal Cats have seen wide use within the NLC, who seeks to reduce their reliance on Northco. Some gear jocks favor Metal Cats over Hunters due to their smaller size and increased speed.</p>	



Location	Stock	Strip
Torso	6	9
R Manip	0	2
L Manip	0	2
R Shoulder	0	2
L Shoulder	0	0

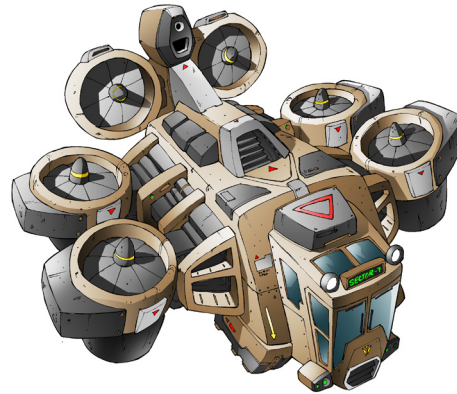
Variant	TV	PL	Crew	MR	Arm	HI	GU	PI	EW	Weapons, Equipment & Traits	Type	HT
Metal Cat	18	3	1	W/G:8	6	8	+0	+1	-1	LRBZ (Manip), LVB (Manip), LSMG, LRP (Shoulder)	Gear	1.5"
Metal Cat Gunner	18	3	1	W/G:8	6	8	+0	+1	-1	LAC (Manip), LVB (Manip), LRP (Shoulder)	Gear	1.5"
Metal Cat Sniper	20	3	1	W/G:8	6	8	+0	+1	-1	MRF (Manip), LVB (Manip), LRP (Shoulder)	Gear	1.5"
Metal Cat Wildfire	18	3	1	W/G:8	6	8	+0	+1	-1	MAC (Manip), LVB (Manip), LIRP (Shoulder)	Gear	1.5"
Metal Cat Initiate	18	3	1	W/G:8	6	8	+0	+1	-1	MFL (Manip), LRP (Shoulder), LVB (Link)	Gear	1.5"
Metal Cat UC	18	3	1	W/G:8	6	8	+0	+1	-1	MFC (Manip), LVB (Manip), LRP (Shoulder)	Gear	1.5"
Red Cat	22	3	1	W/G:8	6	8	+0	+1	-1	MAC (Manip), LSG (Manip), Field Armor	Gear	1.5"
Hands, Early Warning System, Comms Suite, Armored Jacket												

Code Name:	Mitzraim
Manufacturer:	Various
Unit Type:	Surveillance/ Light Assault
Height:	2.3 meters / 7.5 ft
Weight:	2,600 kg / 5,732 lbs
<p>The Mitzraim used extensively to patrol the periphery, mainly for aerial protection, but also for counter-insurgency and anti-bandit operations. In the past decades, it has seen an increasing amount of combat versus the scattered Liberati rebels, especially since the arrival of the CEF, who co-opted a number of these vehicles for their own use.</p>	



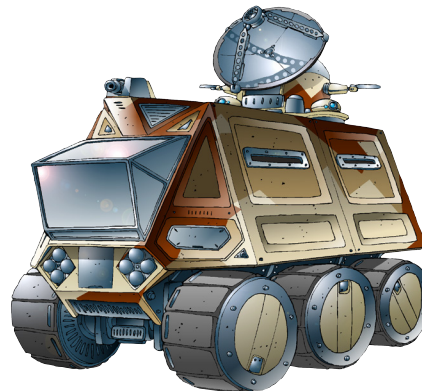
Variant	TV	PL	Crew	MR	Arm	HI	GU	PI	EW	Weapons, Equipment & Traits	Type	HT
Mitzraim	16	2	2	H:9	4	6	-1	+1	-1	LRL, LAVM (Ammo: 2). Spotlight, Target Designator Hostile, Environment Kit	Veh, VTOL	1"

Code Name:	MK 9 Flitter
Manufacturer:	Various
Unit Type:	Cargo VTOL
Height:	6.1 meters / 20.1 ft
Weight:	15,000 kg / 33,070 lbs
<p>The Type 9 is a workhorse design used by many corporations in Gomorrah as a utility transport for moving small cargo lots between sites quickly and efficiently. The exact number of Type 9s and similar models in service is not known but most estimates suggest more than five million have been built over the last century and a half since the first version entered service.</p>	



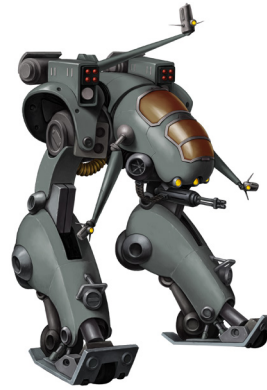
Variant	TV	PL	Crew	MR	Arm	HI	GU	PI	EW	Weapons, Equipment & Traits	Type	HT
Flitter	10	1	2	H:8	3	8	-1	-1	-1	Hostile Environment Kit, Life Support, Supply Storage	Veh, VTOL	1.5"

Code Name:	Murdock
Manufacturer:	Hansen's Electronics
Unit Type:	C3 Vehicle
Height:	3.5 meters / 11.5 ft
Weight:	1,6700 kg / 3,6682 lbs
<p>The Murdock is designed as a mobile field HQ and C3 (Command, Control &amp; Communication). It was commissioned in TN 1898 by General Jenke Murdock, a famous figure during the Sandstorm Strikes (TN 1896-1905). The vehicle rests on a sturdy six-wheeled chassis, each wheel having its own independent suspension.</p>	



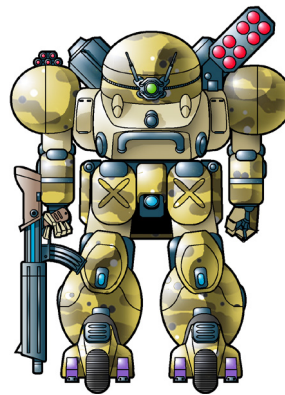
Variant	TV	PL	Crew	MR	Arm	HI	GU	PI	EW	Weapons, Equipment & Traits	Type	HT
Murdock	7	4	2	G:7	6	6	-1	+0	+2	LGL, Satellite Uplink, ECCM Suite, Elite Sensors, Rugged Terrain Kit	Veh	1.5"

Code Name:	Naga
Manufacturer:	Republican Heavy Industries
Unit Type:	Fire Support Strider
Height:	7.2 m / 23.6 ft
Weight:	15,340 kg / 33,819 lb
<p>The Naga is currently one of the premier Striders of the Southern military and is a common sight guarding nearly every military installation. Serving with distinction since its introduction, it proved its worth during the War of the Alliance where its powerful guided missiles were used with great effect against the hovertanks of the CEF.</p>	



Variant	TV	PL	Crew	MR	Arm	HI	GU	PI	EW	Weapons, Equipment & Traits	Type	HT
Hissing Naga	49	7	2	W/G:7	9	8	+0	-1	+0	MAC, 2x MAVM, MAR (Link), LCW, Target Designator, Sensor Boom	Str	2"
Spitting Naga	49	6	2	W/G:7	9	8	+0	-1	+0	MAC, 2x MATM, LAR (Link), LCW, Target Designator, Sensor Boom	Str	2"

Code Name:	Nash Basilisk
Manufacturer:	Territorial Arms Skunk Works
Unit Type:	Stealth Gear
Height:	4.2 meters / 13.8 ft
Weight:	5,290 kg / 11,663 lbs
<p>The Nash Basilisk was one of the first southern gears to be given a radar absorbent coating to create a stealth gear. This was originally done by technicians in MILICIA's 11th Gear Regiment, the Rapiers in the TN 1860s. Skunk Works took it further and even named the unit after a famous gear pilot from the Rapiers.</p>	

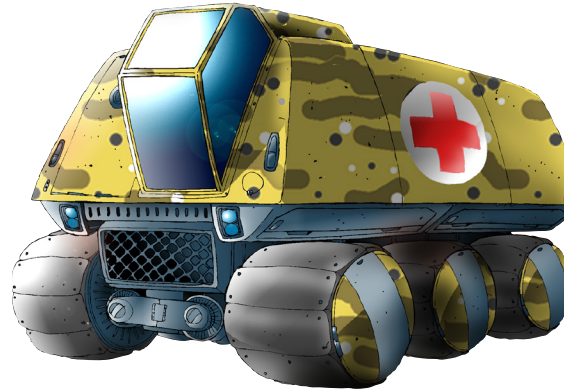


Location	Stock	Strip
Torso	4	7
R Manip	0	2
L Manip	0	2
R Shoulder	0	2
L Shoulder	0	0

Variant	TV	PL	Crew	MR	Arm	HI	GU	PI	EW	Weapons, Equipment & Traits	Type	HT
Nash Basilisk	16	4	1	W/G:7	6	6	+0	+0	+0	LAC (Manip), LVB (Manip), LATM (Shoulder), LAPGL	Gear	1.5"
Nash Gunner	18	4	1	W/G:7	6	6	+0	+0	+0	MAC (Manip), LVB (Manip), LATM (Shoulder), LAPGL	Gear	1.5"
Striking Nash	16	4	1	W/G:7	6	6	+0	+0	+0	LBZ (Manip), LVB (Manip), LATM (Shoulder), LAPGL	Gear	1.5"
Command Upgrade	+2	+1	-	-	-	-	-	-	+1	+ Comms Suite, + ECCM Suite	-	-

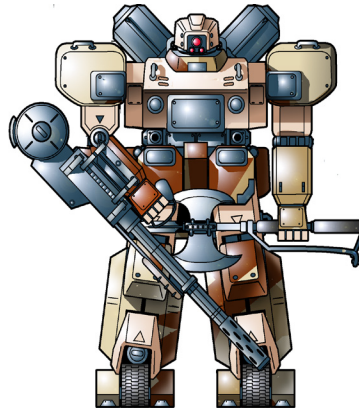
Hands, Rare, Early Warning System, Airborne Deployment Rig, Stealth Kit

Code Name:	Nightingale
Manufacturer:	Various
Unit Type:	MASH Vehicle
Height:	6.23 meters / 20.3 ft
Weight:	5,400 kg / 11,904.9 lbs
<p>The Nightingale is the standard AST Mobile Army Surgical Hospital (MASH) vehicle. Commissioned in 1881, it was a replacement for the Sparrow APC medical variant. The Nightingale offers a limited surgical suite as well as first aid support and even survey kits for determining contaminants.</p>	



Variant	TV	PL	Crew	MR	ARM	HI	GU	PI	EW	Equipment and Traits	Type	HT
Nightingale	10	2	1	G:6	7	8	+0	-1	-1	Medical Suite, Survey Kit, Transport Capacity: 6 Infantry	Veh	2"
NBC Nightingale	9	2	1	G:6	7	8	+0	-1	-1	Life Support, Survey Kit, Hazardous Terrain Kit, Medical Suite	Veh	2"

Code Name:	Panda
Manufacturer:	Northco / Shaian
Unit Type:	Assault Gear
Height:	5.1 meters / 16.7 ft
Weight:	9,215 kg / 20,315.6 lbs
<p>The specification for the Panda came out after the War of the Alliance. CNCS commanders wanted a specialized assault gear based on the Grizzly. The design process was hard on the engineers and technicians but the final result was impressive. It would not be until after the Interpolar War that the Panda would enter production. Limited production numbers make the Panda somewhat rare during the current conflict on Terra Nova.</p>	



Location	Stock	Strip
Torso	5	13
R Manip	0	3
L Manip	0	3
R Shoulder	0	3
L Shoulder	0	3

Variant	TV	PL	Crew	MR	Arm	HI	GU	PI	EW	Weapons, Equipment & Traits	Type	HT
Panda	28	5	1	W/G:6	8	7	+0	+0	-1	HAC (Manip), MVB (Manip), LGM, LFC (Link) (Torso)	Gear	2"
Savage Panda	28	5	1	W/G:6	8	7	+0	+0	-1	HBZ (Manip), MVB (Manip), LGM, LFC (Link) (Torso)	Gear	2"
Rabid Panda	32	6	1	W/G:6	8	7	+0	+0	-1	HRC (Manip), MVB (Manip), LGM, LFC (Link) (Torso), HRP (Link)	Gear	2"
Electrical Refit	+1	+1	-	-	-	-	-	-	-	- Vuln: Haywire	-	-

Hands, Quick Response System, Recon Sensors, Comms Suite, Vuln: Haywire

Code Name:	Para Cheetah
Manufacturer:	Shaian Mechanics
Unit Type:	Paratrooper Gear
Height:	4.1 m / 13.5 ft
Weight:	5,010 kg / 11,045 lbs
<p>Given the vast distances to cover and the importance of a quick reaction force, it was inevitable that a Cheetah Paratrooper would come to be. Just as with the base Cheetah, this cat can strike hard and disappear before the enemy knows what hit them. Cheetah pilots are usually very happy with their assignments to this gear.</p>	



Location	Stock	Strip
Torso	2	6
R Manip	0	2
L Manip	0	2
R Shoulder	0	0
L Shoulder	0	0

Variant	TV	PL	Crew	MR	ARM	HI	GU	PI	EW	Equipment and Traits	Type	HT
Para Stalking Cheetah	22	6	1	W/G:9	5	6	+0	+1	+1	LLC (Manip), LSG (Manip)	Gear	1.5"
Para Stalking Cheetah RFL	20	6	1	W/G:9	5	6	+0	+1	+1	MRF (Manip), LSG (Manip)	Gear	1.5"
Para Strike Cheetah	19	7	1	W/G:9	5	6	+0	+1	+1	LSMG (Manip), LSG (Manip), ECCM Suite, Satellite Uplink	Gear	1.5"
Night Cheetah	24	7	1	W/G:9	5	6	+0	+1	+1	LRBZ (Manip), LSMG (Manip), LVB, Stealth Kit, ECCM Suite, Satellite Uplink	Gear	1.5"
Para Cheetah SECCOM	21	7	1	W/G:9	5	6	+0	+1	+1	LSMG (Manip), LSG (Manip), ECCM Suite, ECM Suite, LPP (Shoulder), Stealth Kit	Gear	1.5"
Thunder Upgrade	+4	+1	-	-	-	-	-	-	+2	+ Satellite Uplink	-	-
Hands, Early Warning System, Airborne Deployment Rig, Comms Suite, ECM Suite, Target Designator, Recon Sensors												

Code Name:	Perseus
Manufacturer:	Paxton
Unit Type:	Recon Gear
Height:	4.1 meters / 13.5 ft
Weight:	5,600 kg / 12,345 lbs
<p>Despite NuCoalition claims, the Perseus was actually the first hover-gear on Terra Nova. This gear spent many cycles in development and only went into full production for a short period of time before evolving into the Raven. However, the ones remaining can still be found in Paxton facilities and a few other locations.</p>	

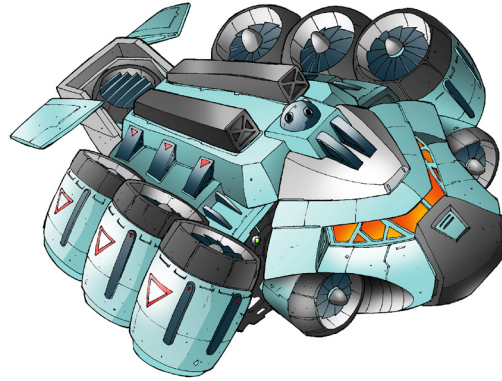


Location	Stock	Strip
Torso	6	12
R Manip	0	2
L Manip	0	2
R Shoulder	0	0
L Shoulder	0	0

Variant	TV	PL	Crew	MR	ARM	HI	GU	PI	EW	Equipment and Traits	Type	HT
Perseus	21	7	1	W/H:8	5	6	+1	+1	+2	MAC/LFL (Manip), LVB (Manip), LMG	Gear	1.5"
Scourge Perseus	20	7	1	W/H:8	5	6	+1	+1	+2	LRBZ (Manip), LVB (Manip), LMG	Gear	1.5"
Sin Perseus	20	7	1	W/H:8	5	6	+1	+1	+2	LRF (Manip), LVB (Manip), LMG	Gear	1.5"
Assassin Perseus	22	7	1	W/H:8	5	6	+1	+1	+2	MRF (Manip), LVB (Manip), LMG	Gear	1.5"
Spectre Perseus	24	7	1	W/H:8	5	6	+1	+1	+2	MAC/LFL (Manip), LVB (Manip), LMG, ECM Suite, ECCM Suite	Gear	1.5"
Hands, Early Warning System, Elite Sensors, Comms Suite, Target Designator, Rare												

Code Name:	Rapid Response VTOL
Manufacturer:	Various
Unit Type:	Rapid Response Vehicle
Height:	7.4 meters / 24.31 ft
Weight:	31,000 kg / 68,343 0lbs

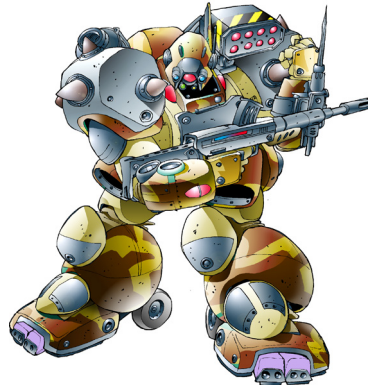
The RRT is used extensively for ferrying Mounts and other emergency response equipment to locations throughout Gommorrah and occupied areas on Terra Nova. The Corp-Serf usually has a single RRT loaded with two Type 55 and one Type 32 flying a circuit above problem areas.



Variant	TV	PL	Crew	MR	Arm	HI	GU	PI	EW	Weapons, Equipment & Traits	Type	HT
RR VTOL	15	2	2	H:7	4	10	-1	-1	-1	MAPGL, Hostile Environment Kit, Transport: 4 Gears	Veh, VTOL	1.5"

Code Name:	Rock Mamba
Manufacturer:	Territorial Arms
Unit Type:	Advanced Mountain Strike Gear
Height:	4.6 meters / 15.1 ft
Weight:	6,700 kg / 11,788 lbs

Designed in the buildup to the Interpolar War, the Rock Mamba is designed to dominate in mountainous terrain. This Mamba would be the first to remove the infamous 'glass back' fault of the line and features reinforced legs for climbing. Attempts at further increasing its sensor range or adding a satellite uplink failed due to power issues.



Location	Stock	Strip
Torso	7	14
R Manip	0	3
L Manip	0	3
R Shoulder	0	2
L Shoulder	0	0

Variant	TV	PL	Crew	MR	Arm	HI	GU	PI	EW	Weapons, Equipment & Traits	Type	HT
Rock Mamba	22	5	1	W/G:7	7	7	+1	+1	+0	LRBZ (Manip), LSG (Manip), LGM, LRP (Shoulder), LPZ	Gear	1.5"
Rock Mamba Gunner	22	5	1	W/G:7	7	7	+1	+1	+0	MAC (Manip), LSG (Manip), LGM, LRP (Shoulder), LPZ	Gear	1.5"
Hunting Rock Mamba	22	5	1	W/G:7	7	7	+1	+1	+0	HRF (Manip), LSG (Manip), LGM, LRP (Shoulder), LPZ	Gear	1.5"
Striking Rock Mamba	22	5	1	W/G:7	7	7	+1	+1	+0	MBZ (Manip), LSG (Manip), LGM, LRP (Shoulder), LPZ	Gear	1.5"
Venomous Upgrade	+0	+0	-	-	-	-	-	-	-	- LRP (Shoulder), + LAPR (Shoulder)	-	-
Switchback Upgrade	+4	+1	-	-	-	-	-	-	+1	+ Comms Suite, + Recon Sensors, + Target Designator	-	-
Razorfang Upgrade	+2	+1	-	-	-	-	-	-	+1	+ Comms Suite	-	-

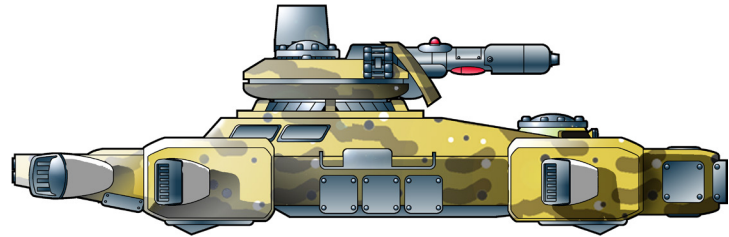
Hands, Early Warning System, Climbing Gear, Airborne Deployment Rig

Code Name:	Scarab VTOL
Manufacturer:	Various
Unit Type:	Transport Unti
Height:	6.0 meters / 19.8 ft
Weight:	15,000 kg / 33,070 lbs
<p>Scarabs are used to transport squads of drones and APES to their patrol zones and between different theaters. Due to their inherent fragility, they are rarely engaged in combat situations, preferring instead to drop their cargo away from the battlezone.</p>	



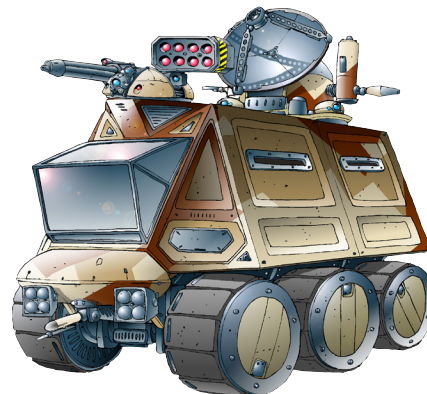
Variant	TV	PL	Crew	MR	Arm	HI	GU	PI	EW	Weapons, Equipment & Traits	Type	HT
Scarab	12	1	2	H:6	4	8	+0	+0	-1	Transport: 4 Gears or Drones, Hostile Environment Kit	Veh, VTOL	2"
Scarab Carrier	12	1	2	H:6	4	8	+0	+0	-1	Transport: 12 Infantry, , Hostile Environment Kit	Veh, VTOL	2"
Scarab Gunship	18	3	2	H:6	4	8	+0	+0	-1	LRC, 2x MIRP, Hostile Environment Kit	Veh, VTOL	2"

Code Name:	Scythian
Manufacturer:	Republican Tank Arsenal
Unit Type:	Assault Hovercraft
Height:	3 m / 9.84 ft
Weight:	34,660 kg / 76,412.2 lb
<p>The Scythian was an attempt by the Southern Republic to recreate the CEF "Predator" heavy hover tanks. The final result is more closely compared to the northern Klemm instead of the heavier CEF tanks. The unit though costs more than a Visigoth MBT and is a unpopular with technical crews which resulted only limited production before being scrapped in favor of the Humanist Hetairoi.</p>	



Variant	TV	PL	Crew	MR	Arm	HI	GU	PI	EW	Weapons, Equipment & Traits	Type	HT
Scythian	48	7	2	H:8	10	8	+0	+0	+0	MPL (T), MATM (T), MAPGL, Airborne Deployment Rig	Veh	2"

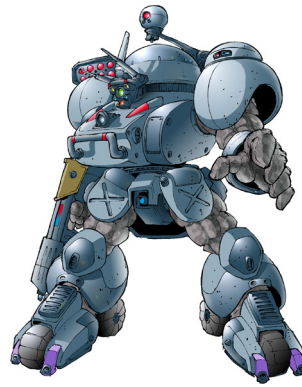
Code Name:	Seeker
Manufacturer:	Hansen's Electronics
Unit Type:	C3 Vehicle
Height:	3.5 meters / 11.5 ft
Weight:	16,700 kg / 33,682 lbs
<p>The Seeker has a large sensor array, stealth system and electronic warfare assets to listen in or even interfere with enemy transmissions. Two technicians operate the equipment from workstations placed in a roomy compartment in the back. The vehicle has a roof-mounted machine gun and rocket pack for defense.</p>	



Variant	TV	PL	Crew	MR	Arm	HI	GU	PI	EW	Weapons, Equipment & Traits	Type	HT
Seeker	7	6	2	G:7	6	6	-1	+0	+2	MMG, LRP, Rugged Terrain Kit, Comms Suite, Advanced ECM Suite, ECCM Suite, Elite Sensors, Stealth Kit	Veh	1.5"



Code Name:	Silverscale
Manufacturer:	Territorial Arms
Unit Type:	Recon Gear
Height:	4.2 m / 13.8 ft
Weight:	4,890 kg / 10,781 lb
<p>Based on the Basilisk trooper gear, the Silverscale comes equipped with an even more advanced communications and electronic warfare suite. The target designator can extend out from the head and can be used to peer around corners. Territorial Arms claims the Silverscale is the finest recon gear on Terra Nova today.</p>	



Location	Stock	Strip
Torso	2	6
R Manip	0	2
L Manip	0	2
R Shoulder	0	2
L Shoulder	0	0

Variant	TV	PL	Crew	MR	Arm	HI	GU	PI	EW	Weapons, Equipment & Traits	Type	HT
Jammer Silverscale	22	7	1	W/G:7	5	6	+0	+0	+2	LAC (Manip), LVB (Manip), LRP (Shoulder), LAPGL, Elite Sensors	Gear	1.5"
Hands, Comms Suite, Advanced ECM Suite, ECCM Suite, Target Designator, Sensor Boom, Extended Fuel Tanks												

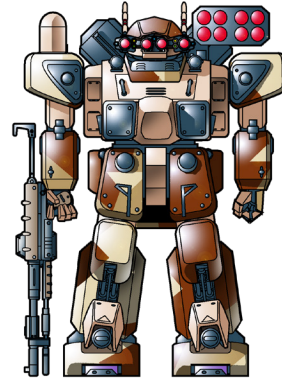
Code Name:	Spartan II
Manufacturer:	Paxton
Unit Type:	Heavy Trooper Gear
Height:	5.4 meters / 17.7 ft
Weight:	9,670 kg / 21,319 lbs
<p>The Spartan II was an attempt by Paxton Arms to standardize a highly customized product. The demand for more customization continued though and sales of the Spartan II were slow at best. The line was shut down after only a few cycles. Since the CEF invasion however, demand for gears of any type has pushed this oddity back into production.</p>	



Location	Stock	Strip
Torso	4	9
R Manip	0	3
L Manip	0	3
R Shoulder	0	0
L Shoulder	0	0

Variant	TV	PL	Crew	MR	ARM	HI	GU	PI	EW	Equipment and Traits	Type	HT
Spartan II	28	5	1	W/G:6	8	7	+0	+0	+0	HAC (Manip), LCBL (Manip), MMG	Gear	2"
Incendiary Spartan II	26	5	1	W/G:6	7	7	+0	+0	+0	MFL (Manip), LCBL (Manip), MMG, LGM	Gear	2"
Assassin Spartan II	28	6	1	W/G:6	7	7	+0	+0	+0	HRF (Manip), LCBL (Manip), MMG	Gear	2"
Kestros Spartan II	28	5	1	W/G:6	7	7	+0	+0	+0	MGL (Manip), LCBL (Manip), MMG	Gear	2"
Fusillade Spartan II	30	7	1	W/G:6	7	7	+0	+0	+0	MRL (Manip), LCBL (Manip), MMG	Gear	2"
Enfilade Spartan II	30	7	1	W/G:6	7	7	+0	+0	+0	MPA (Manip), LCBL (Manip), MMG	Gear	2"
Melee Specialist Upgrade	+2	+1	-	-	-	-	-	-	+1	- HAC (Manip), - LCBL (Manip), + HAC, + MCBL (Link) (L&R Manips)	-	-
Spectre Upgrade	+3	+1	-	-	-	-	-	-	+1	+ ECM Suite, + Recon Sensors	-	-
Hands, Airborne Deployment Rig, LFC (Torso)												

Code Name:	Spearhead Tiger
Manufacturer:	Northco
Unit Type:	Command Gear
Height:	4.6 meters / 15.1 ft
Weight:	7,320 kg / 16,138 lbs
<p>With the threat of invasion looming, Northco has attempted to expand its catalog to meet increasing demand. One recent example is the new command variant of the popular Tiger line. The Spearhead Tiger features inbuilt communications hardware and signal boosters to push past enemy interference.</p>	



Location	Stock	Strip
Torso	6	9
R Manip	0	3
L Manip	0	3
R Shoulder	0	3
L Shoulder	2	0

Variant	TV	PL	Crew	MR	Arm	HI	GU	PI	EW	Weapons, Equipment & Traits	Type	HT
Spearhead Tiger	23	5	1	W/G:6	7	7	+1	+1	+0	HAC (Manip), LVB (LVB), MRP (Shoulder), LAPGL	Gear	1.5"
Hands, Satellite Uplink, ECCM Suite												

Code Name:	Stonemason
Manufacturer:	Territorial Arms
Unit Type:	Engineering Gear
Height:	4.3 m / 14.1 ft
Weight:	7,160 kg / 15,785 lbs
<p>Although the Stonemason shares the same basic frame as the Jager, considerable modifications have been made to improve its capabilities in the engineering role. A set of tool arms on the back of the gear are equipped with a simple set of grasping claws that are often used in melee combat to great effect.</p>	



Location	Stock	Strip
Torso	4	5
R Manip	0	2
L Manip	0	2
R Shoulder	0	0
L Shoulder	0	0

Variant	TV	PL	Crew	MR	ARM	HI	GU	PI	EW	Equipment and Traits	Type	HT
Foreman Stonemason	10	2	1	W/G:6	5	6	-1	+0	-1	LAC (Manip), MCW (Reach:1, Demo:4) (Manip), LFRG, LSE, 2x LCW (Torso), Comms Suite	Gear	1.5"
Airdrop Upgrade	+2	+1	-	-	-	-	-	-	-	+ Airborne Deployment Rig	-	-
Hands, Ubiquitous, Brawler:1, Repair Array, Vuln:Fire, Widespread, 2x LCW (Torso), Exposed Pilot												

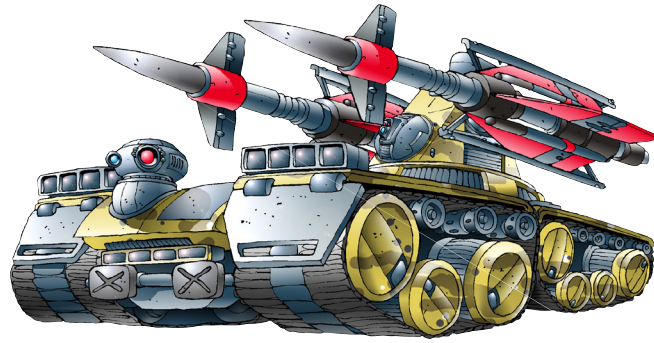
Code Name:	Stripped-Down Jager
Manufacturer:	Territorial Arms
Unit Type:	Trooper Gear
Height:	4.3 m / 14.1 ft
Weight:	5,698 kg / 12,562 lb
<p>Almost as soon as the North deployed the Stripped-Down Hunter, Southern patrol forces absconded with one of the gears for Territorial Arms to reverse engineer it. The efficiency at which the South is able to perform such actions is remarkable, and Northern commanders everywhere curse it.</p>	



Location	Stock	Strip
Torso	4	6
R Manip	0	2
L Manip	0	2
R Shoulder	0	0
L Shoulder	0	0

Variant	TV	PL	Crew	MR	ARM	HI	GU	PI	EW	Equipment and Traits	Type	HT
Stripped-Down Swamp Jager	11	2	1	W/G:7	5	6	+0	+1	-1	LAC (Manip), LVB (Manip), LFRG, LAPGL, Amphibious Sealing	Gear	1.5"
Hands, Ubiquitous, Widespread												

Code Name:	Vandal
Manufacturer:	Republican Tank Arsenal
Unit Type:	Tactical Missile Carrier
Height:	4.73 meters / 15.5 ft
Weight:	56,200 kg / 123,900 lbs
<p>Based on the Visigoth chassis, the Vandal mounts a pair of heavy missiles for long range attacks. Despite only having a pair of them, the Hellbringer missiles devastate the target area. The Vandal itself hangs back and tries to avoid direct combat. The Vandal is only commonly seen in the Southern Republic due to the cost.</p>	



Variant	TV	PL	Crew	MR	Arm	HI	GU	PI	EW	Weapons, Equipment & Traits	Type	HT
Vandal	74	9	2	G:4	12	10	+0	-1	-1	2x HAM (Apex, Ammo:1), Rugged Terrain Refit, Smoke Launchers	Veh	1"

Code Name:	Wallaby
Manufacturer:	Various
Unit Type:	All-Terrain Vehicle
Height:	1.64 meters / 5.5 ft
Weight:	250 kg / 551.2 lbs
<p>The Wallaby is an all-terrain vehicle used for scouting and recon. The design has existed since 1899 and has spawned several variants. The base Wallaby is unarmed but a weaponized version exists. A stealth option is also available.</p>	



Variant	TV	PL	Crew	MR	ARM	HI	GU	PI	EW	Equipment and Traits	Type	HT
Wallaby ATV	8	1	1	G:10	3	3	+0	+1	-1	MMG, LGL, Early Warning System, Rugged Terrain Refit, Exposed Pilot	Veh	0.5"
Wallaby	4	1	1	G:11	2	3	+0	+1	-1	Early Warning System, Exposed Pilot	Veh	0.5"
Sneak Wallaby	6	4	1	G:11	3	3	+0	+1	-1	Early Warning System, Stealth Kit	Veh	0.5"

